

Sandberg®
ACTIVE

Powerbank USB-C PD 130W 50000

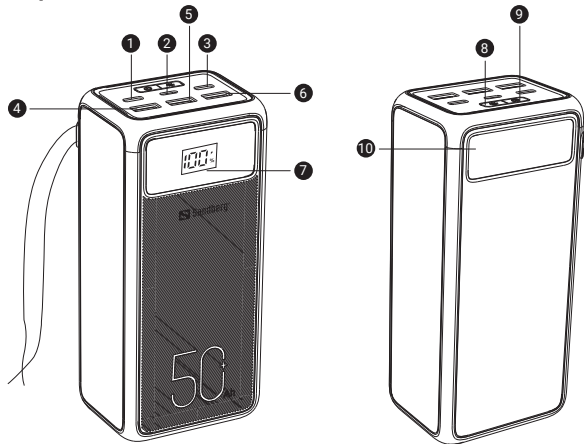
Quick guide

420-75



www.sandberg.world

Product preview



- 1. OUT1 (USB-C, 30W)
- 2. IN2 (Lightning, 18W) Input
- 3. IN/OUT3 (USB-C, 100W)
- 4. OUT4 (USB, 18W)

- 5. OUT5 (USB, 18W)
- 6. OUT6 (USB, 18W)
- 7. LED Digital Display
- 8. Lamp Button

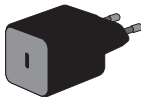
- 9. Switch Button
- 10. Lamp

Charge Powerbank

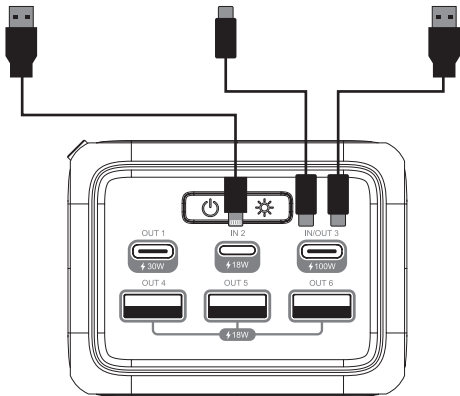
Option A



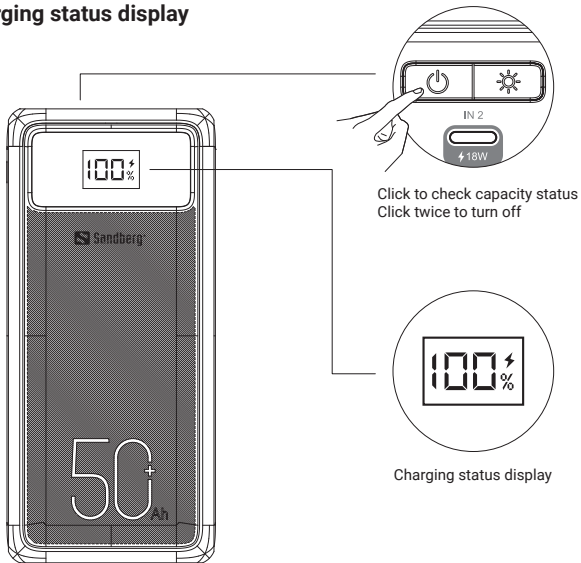
Option B



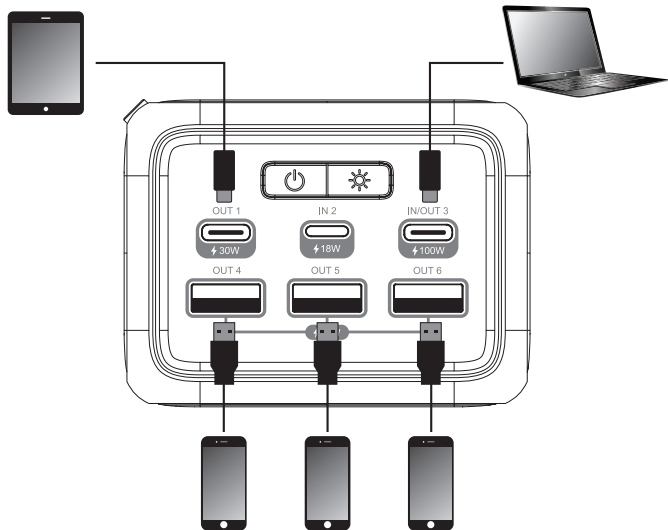
Option C



Charging status display



Charge devices



Lamp

1



Press once



2



Press once more



3



Press 4 sec to activate continuous SOS morse mode



4

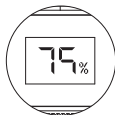


Press once

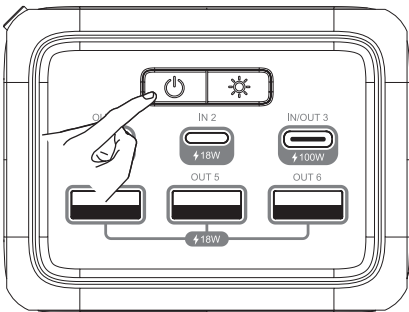


Always-ON-Mode

NOTE: The powerbank will turn off after 2 hours if no device is connected, or if a device consuming below 60 mA is connected.



Display blinking in last digit



Press 4 seconds to activate the Always-ON-Mode

<http://helpdesk.sandberg.world>

Warranty

There is a five-year warranty on your Sandberg product. Please read the warranty terms and register your new Sandberg product at www.sandberg.world/warranty

5
Years
Warranty

Powerbank USB-C PD 130W 50000

Capacity: 50000 mAh / 185 Wh

Port 1 : OUT (USB-C) : 5V/3.0A, 9V/3.0A, 12V/2.5A (30W Max)

Port 2 : IN : 5V/2.0A, 9V/2.0A (18W Max)

Port 3 : OUT (USB-C) : 5V/3.0A, 9V/3.0A, 12V/3.0A, 15V/3.0A, 20V/5.0A (100W Max)

Port 3 : IN (USB-C) : 5V/3.0A, 9V/3.0A, 12V/3.0A, 15V/3.0A, 20V/3.0A (60W Max)

Port 4, 5, 6 : OUT (USB-A) : 5V/3.0A (Total 18W Max Balanced load)

www.sandberg.world Item no. 420-75 Made in China

Sandberg A/S
Bregnerødvej 133D,
3460 Birkerød, Denmark



For information on handling electronic waste, see www.sandberg.world/weee