



USB 3.2 Cloner & Dock for M2 + NVMe + SATA

Quick guide

136-49



www.sandberg.world

5

Years
Warranty

Warranty

There is a five-year warranty on your Sandberg product. Please read the warranty terms and register your new Sandberg product at www.sandberg.world/warranty

Support

<http://helpdesk.sandberg.world>



USB 3.2 Cloner & Dock for
M2 + NVMe + SATA

Item no. 136-49

www.sandberg.world

Sandberg A/S

Bregnerødvej 133D,

3460 Birkerød, Denmark

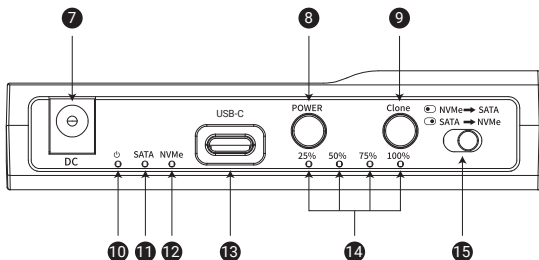
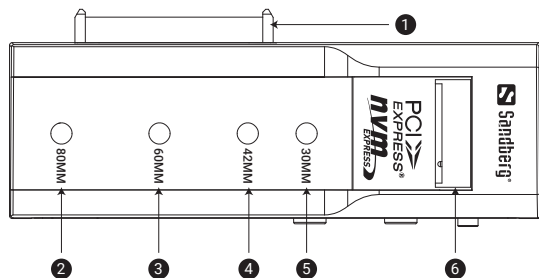


Made in China



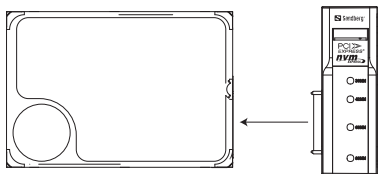
For information on handling electronic waste, see www.sandberg.world/weee

Product preview

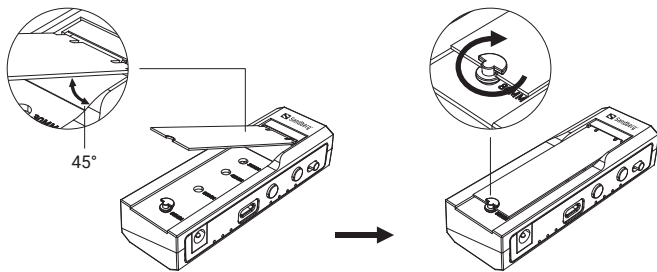


1. 3.5" / 2.5" SATA connector
2. 2280 disk
3. 2260 disk
4. 2242 disk
5. 2230 disk
6. NVMe M-key connector
7. DC for power supply
8. Power button
9. Clone button
10. Power indicator
11. SATA disk indicator
12. NVMe SSD indicator
13. USB-C (connect to the data port of PC)
14. Clone progress indicator
15. Clone setting key

Connection

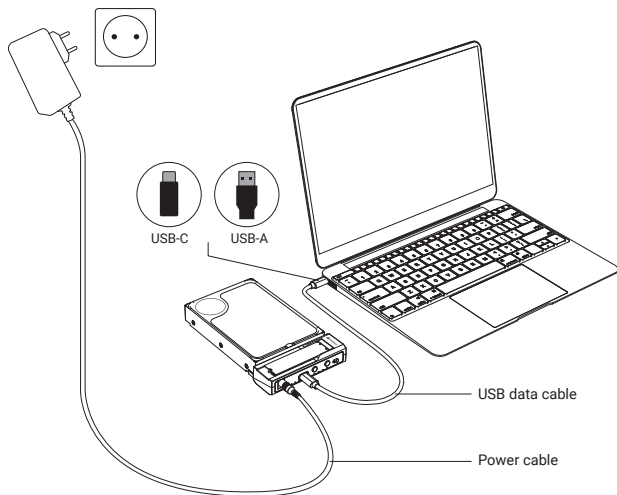


SATA HDD/SSD

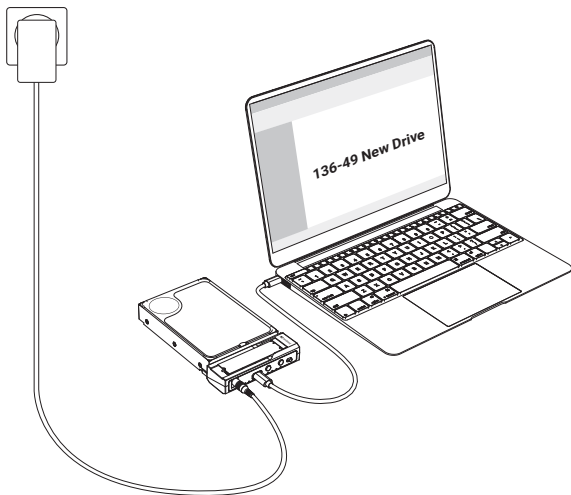


M.2 NVMe SSD

Connection



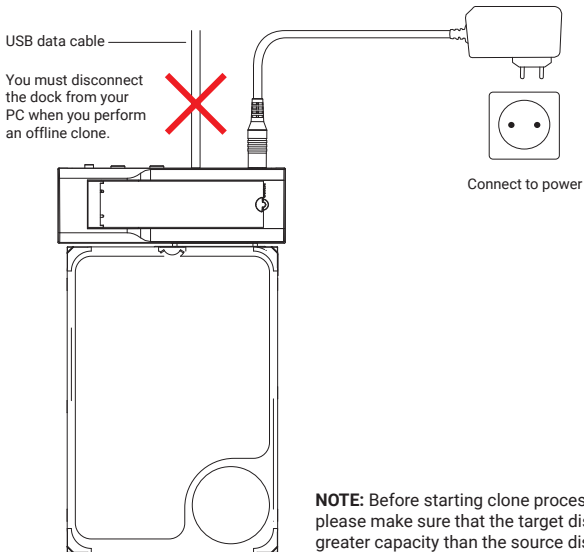
Dock function



Read and write to the disks connected to the dock.
NOTE: Brand new drives must be formatted before use.

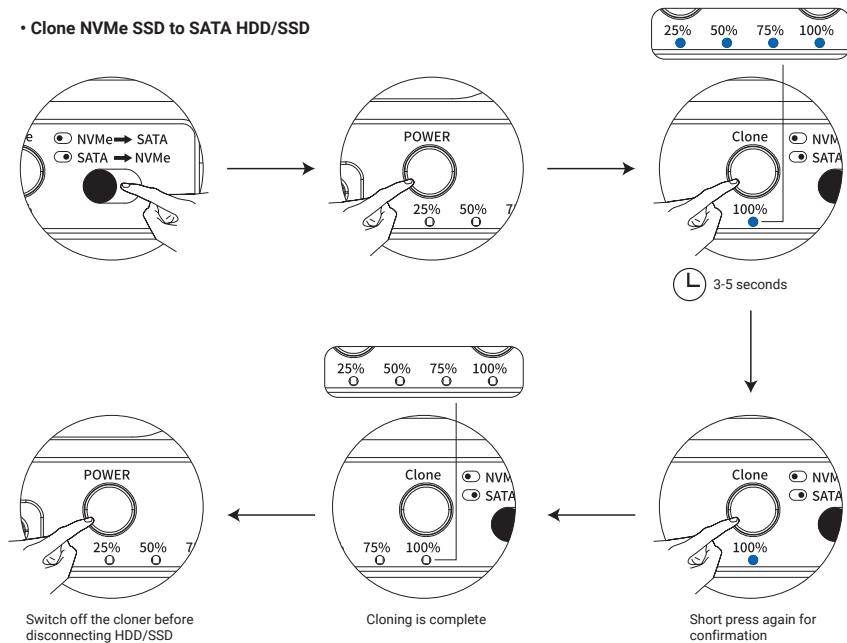
Offline clone

1.



2.

• Clone NVMe SSD to SATA HDD/SSD



• Clone SATA HDD/SSD to NVMe SSD
